

**ITEM 33. PARKING – LOADING ZONE AND 1 MINUTE TAXI SETDOWN –
COMMONWEALTH STREET AND GOULBURN LANE SURRY HILLS**

TRIM RECORD NO: 2016/547993

RECOMMENDATION

It is recommended that the Committee endorse the following reallocation of parking in Surry Hills:

- (A) Southern side of Goulburn Lane, between the points 24 metres and 29.7 metres (one car space) east of Commonwealth Street as: “Loading Zone, Ticket, 7am-6pm Mon-Fri, 7am-10am Sat; 4P Ticket 6pm-10pm Mon-Fri, 10am-10pm Sat, 8am-10pm Sun & Public Holidays”;
- (B) Eastern side of Commonwealth Street between points 0 metres and 8.25 metres south of Goulburn Lane as “No Stopping – Taxis Excepted 1 Min Limit”; and
- (C) Eastern side of Commonwealth Street between points 8.25 metres and 16.5 metres south of Goulburn Lane as “Loading Zone, Ticket 7am-6pm Mon-Fri, 7am-10am Sat; 4P Ticket 6pm-10pm Mon-Fri, 10am-10pm Sat, 8am-10pm Sun & Public Holidays”.

VOTING MEMBERS FOR THIS ITEM

<i>Voting Members</i>	<i>Support</i>	<i>Object</i>
City of Sydney		
Roads and Maritime Services		
NSW Police – Surry Hills LAC		
Representative for the Member for Sydney		

DECISION

BACKGROUND

The Developer of 74-76 Commonwealth Street, Surry Hills has requested a Loading Zone restriction in Goulburn Lane, across the former driveway of the property and a “No Stopping – Taxis Excepted 1 Min Limit” on the Commonwealth Street frontage of the site.

COMMENTS

Property 74-76 Commonwealth Street, Surry Hills has a driveway on Goulburn Lane which is currently signposted as “No Parking”.

The City has approved the redevelopment of the site and a condition of Development Consent requires the removal of the driveway and the adjustment to the parking restrictions in front of the development.

It is proposed to reallocate the “No Parking” zone across the former driveway in Goulburn Lane to “Loading Zone, Ticket, 7am-6pm Mon-Fri, 7am-10am Sat; 4P Ticket 6pm-10pm Mon-Fri, 10am-10pm Sat, 8am-10pm Sun & Public Holidays” - similar to nearby Loading Zones.

It is also proposed to extend and reallocate the “No Stopping” zone on Commonwealth Street at the corner of Goulburn Lane, into “No Stopping – Taxis Excepted 1 Min Limit”. The new development will include a boutique hotel so this change will provide for taxis dropping-off and picking-up adjacent to the hotel without impacting kerb side parking.

This change will require the adjacent Loading Zone to be moved southwards accordingly.

CONSULTATION

The City did not consult local residents in the area as this change is required as part of the development consent.

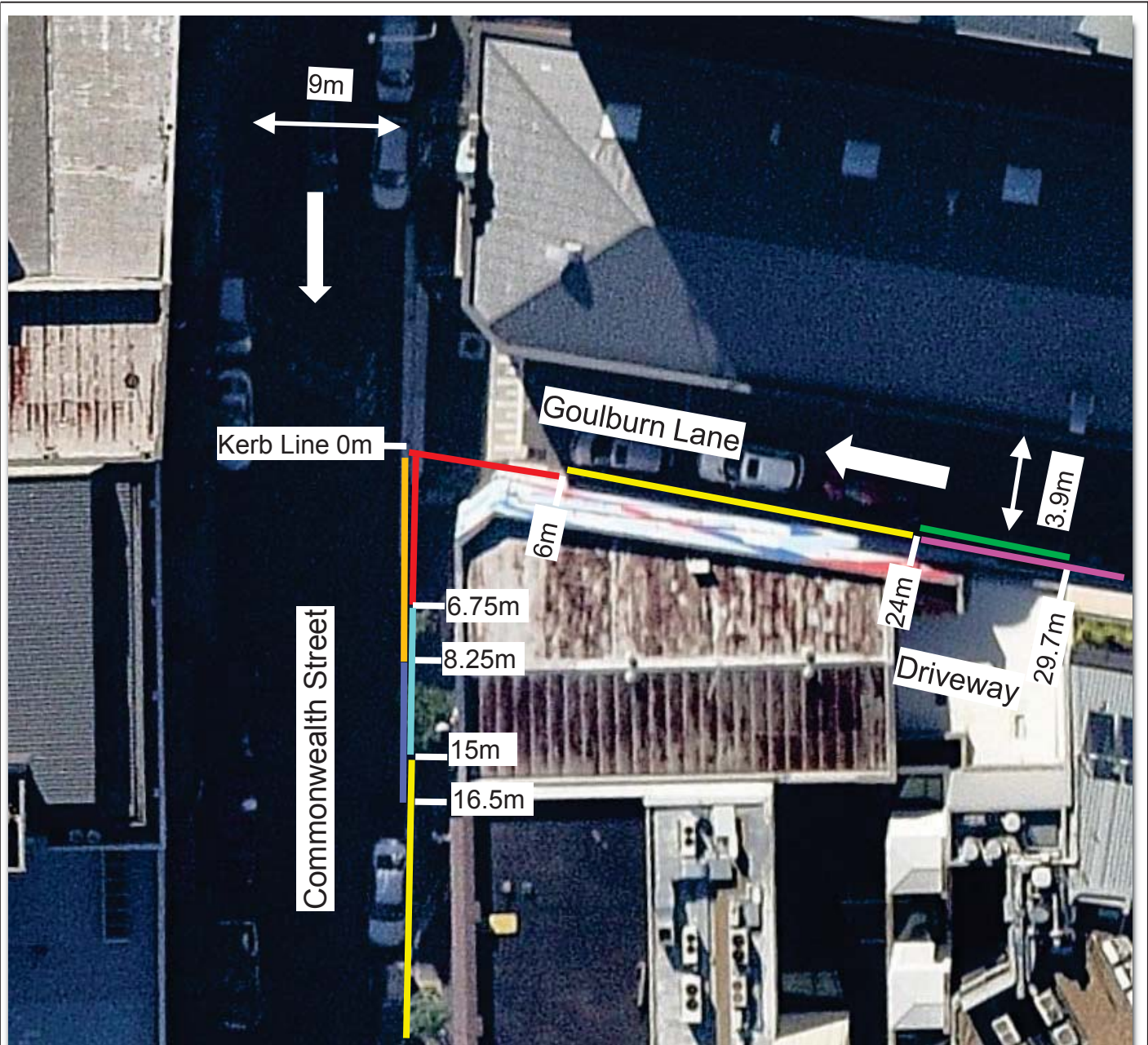
FINANCIAL

Funds are available in the current budget.

ATTACHMENTS

Parking – Loading Zone and 1 Minute Taxi Setdown – Commonwealth Street and Goulburn Lane Surry Hills

James Nguyen, Engineering Traffic Officer



	No Parking (Existing)		Loading Zone, Ticket 7am-6pm Mon-Fri, 7am-10am Sat; 4P Ticket 6pm-10pm, 10am-10pm Sat, 8am-10pm Sun & Public Holidays (Proposed)
	No Stopping (Existing)		Loading Zone, Ticket 7am-6pm Mon-Fri, 7am-10am Sat; 4P Ticket 6pm-10pm, 10am-10pm Sat, 8am-10pm Sun & Public Holidays (Proposed)
	2P Ticket 8am-6pm Mon-Fri, 4P Ticket 6pm-10pm Mon-Fri, 8am-10pm Sat-Sun & Public Holidays (Existing)		No Stopping – Taxis Excepted 1 Min Limit (Proposed)
	Loading Zone, Ticket 7am-6pm Mon-Fri, 7am-10am Sat; 4P Ticket 6pm-10pm, 10am-10pm Sat, 8am-10pm Sun & Public Holidays (Existing)		

Source: Nearmap -- Thursday 5 May 2016

PROPOSAL

PROPOSED PARKING CHANGES
GOULBURN LANE & COMMONWEALTH STREET
SURRY HILLS



